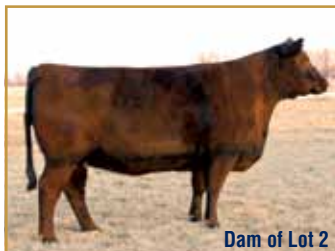




Sire of Lots 1 thru 13



Maternal Grandam of Lots 1 & 19



Dam of Lot 2

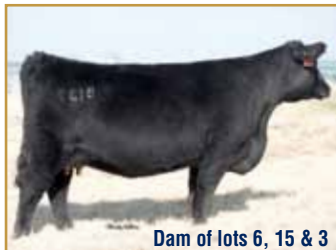


Dam of Lots 3 & 16

Lot #	Eggs	Sire Name Dam Name	Sire Reg Dam Reg	MGS Name MGD Name	EPDs	BW	WW	YW	Milk	Marb	REA	\$B
1	4	Connealy Consensus 7229 EXAR Rita U049	16447771 15977165	E&B 1680 Precision 1023 G A R New Design 1200	Sire EPDs Dam EPDs	0.8 2.5	70 53	123 93	20 22	0.63 0.52	0.30 0.78	64.86 70.05
2	4	Connealy Consensus 7229 G A R Objective L166	16447771 15594928	S S Objective T510 OT26 G A R 1407 New Design 1942	Sire EPDs Dam EPDs	0.8 1.8	70 54	123 99	20 38	0.63 0.63	0.30 0.37	64.86 61.00
3	4	Connealy Consensus 7229 Riverbend Everelda S441	16447771 15323440	Twin Valley Precision E161 Three Trees Entense 567G	Sire EPDs Dam EPDs	0.8 2.5	70 45	123 90	20 27	0.63 0.28	0.30 0.70	64.86 54.43
4	4	Connealy Consensus 7229 Dixie Erica of RR 6289	16447771 15564498	EXAR Merit 216 Dixie Erica of RR 9769	Sire EPDs Dam EPDs	0.8 1.8	70 35	123 68	20 22	0.63 0.34	0.30 0.24	64.86 38.70



EXAR Wade, Maternal Sib to Lot 5



Dam of lots 6, 15 & 3

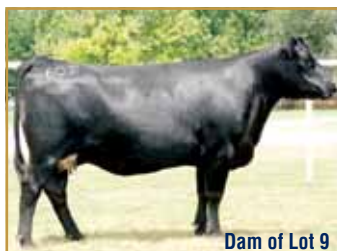


Foundation Dam of Lots 7, 21 & 25



Foundation Dam of Lot 8

Lot #	Eggs	Sire Name Dam Name	Sire Reg Dam Reg	MGS Name MGD Name	EPDs	BW	WW	YW	Milk	Marb	REA	\$B
5	5	Connealy Consensus 7229 74-51 Rodrock Pride 7009	16447771 15798601	EXAR 263C Rodrock Pride 4025	Sire EPDs Dam EPDs	0.8 1.1	70 61	123 113	20 41	0.63 0.51	0.30 0.52	64.86 61.43
6	4	Connealy Consensus 7229 OSU Empress 8139	16447771 16049460	S S Objective T510 OT26 OSU Empress 5179	Sire EPDs Dam EPDs	0.8 1.5	70 55	123 100	20 25	0.63 0.48	0.30 0.25	64.86 55.64
7	4	Connealy Consensus 7229 TF Miss Blackcap 8717	16447771 16094014	D H D Traveler 6807 Sterling Blackcap 445	Sire EPDs Dam EPDs	0.8 1.8	70 37	123 73	20 22	0.63 0.29	0.30 0.16	64.86 39.50
8	4	Connealy Consensus 7229 EXAR Primrose 81090	16447771 15965404	Basin Franchise P142 Twin Valley Primrose 201	Sire EPDs Dam EPDs	0.8 0.0	70 48	123 85	20 22	0.63 0.58	0.30 0.35	64.86 53.10



Dam of Lot 9



Dam of Lot 10



Dam of Lots 11, 12 & 17

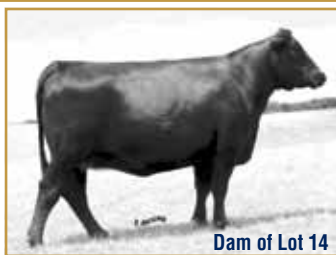


Maternal Grand Sire of Lot 13

Lot #	Eggs	Sire Name Dam Name	Sire Reg Dam Reg	MGS Name MGD Name	EPDs	BW	WW	YW	Milk	Marb	REA	\$B
9	5	Connealy Consensus 7229 RR Envious Blackbird 6031	16447771 15564374	EXAR Nominal 3550 RR Envious Blackbird 4091	Sire EPDs Dam EPDs	0.8 0.3	70 50	123 83	20 20	0.63 -0.08	0.30 -0.08	64.86 20.12
10	4	Connealy Consensus 7229 Three Trees Evergreen U1965	16447771 15997048	Rito 6EM3 of 4L1 Emblazon EXAR Miss Traveler 3178	Sire EPDs Dam EPDs	0.8 -0.8	70 47	123 89	20 21	0.63 0.63	0.30 0.21	64.86 41.72
11	4	Connealy Consensus 7229 Riverbend Blackcap U250	16447771 16057866	Sinclair Rito Legacy 3R9 Riverbend Blackcap R097	Sire EPDs Dam EPDs	0.8 3.1	70 38	123 80	20 28	0.63 0.42	0.30 0.34	64.86 40.87
12	3	Connealy Consensus 7229 Riverbend Blackcap U250	16447771 16057866	Sinclair Rito Legacy 3R9 Riverbend Blackcap R097	Sire EPDs Dam EPDs	0.8 3.1	70 38	123 80	20 28	0.63 0.42	0.30 0.34	64.86 40.87
13	3	Connealy Consensus 7229 Green Garden Sophie G268	16447771 15568410	Gardens Prime Star Green Garden Sophie A266 S1	Sire EPDs Dam EPDs	0.8 3.4	70 42	123 76	20 21	0.63 1.06	0.30 0.10	64.86 51.31



Sire of Lots 14 - 18



Dam of Lot 14



Dam of Lots 6, 15 & 33



Dam of Lots 3 & 16

Lot #	Eggs	Sire Name Dam Name	Sire Reg Dam Reg	MGS Name MGD Name	EPDs	BW	WW	YW	Milk	Marb	REA	\$B
14	4	Summitcrest Complete 1P55 B/R Ruby of Tiffany 5255	14850409 15005213	B/R Ambush 28 B/R Ruby of Tiffany 1210	Sire EPDs Dam EPDs	2.8 0.7	55 33	100 68	27 19	0.72 0.91	0.83 0.53	75.24 66.10
15	4	Summitcrest Complete 1P55 OSU Empress 8139	14850409 16049460	S S Objective T510 0T26 OSU Empress 5179	Sire EPDs Dam EPDs	2.8 1.5	55 55	100 100	27 25	0.72 0.48	0.83 0.25	75.24 55.64
16	4	Summitcrest Complete 1P55 Riverbend Everelda S441	14850409 15323440	Twin Valley Precision E161 Three Trees Entense 567G	Sire EPDs Dam EPDs	2.8 2.5	55 45	100 90	27 27	0.72 0.28	0.83 0.70	75.24 54.43
17	6	Summitcrest Complete 1P55 Riverbend Blackcap U250	14850409 16057866	Sinclair Rito Legacy 3R9 Riverbend Blackcap R097	Sire EPDs Dam EPDs	2.8 3.1	55 38	100 80	27 28	0.72 0.42	0.83 0.34	75.24 40.87
18	4	Summitcrest Complete 1P55 Empress of Holiday 7004	14850409 15664991	Mytty In Focus Empress of Holiday 5122	Sire EPDs Dam EPDs	2.8 -2.3	55 46	100 87	27 23	0.72 0.71	0.83 0.17	75.24 53.43



Sire of Lots 19 - 22



Maternal Grandam of Lots 1 & 19



Dam of Lot 20



Flushmate to Maternal Grandam of Lot 22

Lot #	Eggs	Sire Name Dam Name	Sire Reg Dam Reg	MGS Name MGD Name	EPDs	BW	WW	YW	Milk	Marb	REA	\$B
19	4	EXAR 263C EXAR Rita U049	15012747 15977165	E&B 1680 Precision 1023 G A R New Design 1200	Sire EPDs Dam EPDs	1.3 2.5	57 53	113 93	42 22	0.81 0.52	0.56 0.78	71.13 70.05
20	4	EXAR 263C Sandpoint Blackcap 7865	15012747 15844203	G A R Predestined Sand Point Blackcap 0654	Sire EPDs Dam EPDs	1.3 2.7	57 45	113 79	42 27	0.81 0.74	0.56 0.18	71.13 57.52
21	4	EXAR 263C TF Miss Blackcap 8717	15012747 16094014	D H D Traveler 6807 Sterling Blackcap 445	Sire EPDs Dam EPDs	1.3 1.8	57 37	113 73	42 22	0.81 0.29	0.56 0.16	71.13 39.50
22	4	EXAR 263C RR 5900 Ext 7768	15012747 16152180	N Bar Emulation EXT Sand Creek 4206 RR 5900	Sire EPDs Dam EPDs	1.3 2.0	57 42	113 80	42 17	0.81 0.48	0.56 0.18	71.13 48.10



Sire of Lot 24



Dam of Lots 24 & 34



Sire of Lot 25



Sire of Lots 26 & 27

Lot #	Eggs	Sire Name Dam Name	Sire Reg Dam Reg	MGS Name MGD Name	EPDs	BW	WW	YW	Milk	Marb	REA	\$B
23	2	Sitz Upward 307R Three Trees Evergreen U1965	14963730 15997048	Rito 6EM3 of 4L1 Emblazon EXAR Miss Traveler 3178	Sire EPDs Dam EPDs	2.3 -0.8	69 47	131 89	37 21	0.40 0.63	0.47 0.21	67.18 41.72
24	4	Sitz Upward 307R PF 6578 Primrose 5071	14963730 15072163	G A R Grid Maker W C C Primrose J146	Sire EPDs Dam EPDs	2.3 3.4	69 52	131 97	37 18	0.40 0.47	0.47 0.44	67.18 52.70
25	4	Hoover Dam TF Miss Blackcap 8717	16124994 16094014	D H D Traveler 6807 Sterling Blackcap 445	Sire EPDs Dam EPDs	2.3 1.8	69 37	120 73	27 22	0.32 0.29	0.74 0.16	61.99 39.50
26	3	SQ Credence 67S G A R New Design 6231	15705880 14011413	B/R New Design 036 G A R Precision 1928	Sire EPDs Dam EPDs	0.9 2.4	59 36	94 74	24 23	0.79 0.80	0.18 0.01	39.15 59.79
27	6	SQ Credence 67S EXAR Lady 1497	15705880 15622763	Mytty In Focus Stevenson Lady 981R	Sire EPDs Dam EPDs	0.9 2.1	59 52	94 99	24 22	0.79 0.47	0.18 0.00	39.15 43.47





Sire of Lot 28



Sire of Lot 29



Dam of Lot 30



Sire of Lots 30 & 31

Lot #	Eggs	Sire Name Dam Name	Sire Reg Dam Reg	MGS Name MGD Name	EPDs	BW	WW	YW	Milk	Marb	REA	\$B
28	6	SydGen C C & 7 EXAR Lady 1497	15330743 15622763	Mytty In Focus Stevenson Lady 981R	Sire EPDs Dam EPDs	1.8 2.1	63 52	118 99	27 22	0.38 0.47	0.56 0.00	62.18 43.47
29	5	B/R New Day 454 Green Garden Sophie G268	14675445 15568410	Gardens Prime Star Green Garden Sophie A266 S1	Sire EPDs Dam EPDs	1.8 3.4	53 42	112 76	22 21	0.61 1.06	0.68 0.10	64.50 51.31
30	5	Connealy Final Product Riverbend Blackcap R265	15848422 14988058	Bon View New Design 1407 Rita 3B8 of 2536 BW	Sire EPDs Dam EPDs	-1.2 2.1	59 56	107 93	19 34	0.12 0.66	0.39 0.25	40.50 49.23
31	4	Connealy Final Product Empress of Holiday 7004	15848422 15664991	Mytty In Focus Empress of Holiday 5122	Sire EPDs Dam EPDs	-1.2 -2.3	59 46	107 87	19 23	0.12 0.71	0.39 0.17	40.50 53.43



Sire of Lots 32 - 34



Dam of Lot 32



Grandam of Lot 35



Sire of Lot 35

Lot #	Eggs	Sire Name Dam Name	Sire Reg Dam Reg	MGS Name MGD Name	EPDs	BW	WW	YW	Milk	Marb	REA	\$B
32	4	Rito 6EM3 of 4L1 Emblazon EXAR Lady 1197	15266350 15595284	EXAR 263C Three Trees Lady 3619	Sire EPDs Dam EPDs	-0.9 0.5	53 44	99 90	23 25	0.09 0.53	0.41 0.08	29.39 47.26
33	4	Rito 6EM3 of 4L1 Emblazon OSU Empress 8139	15266350 16049460	S S Objective T510 OT26 OSU Empress 5179	Sire EPDs Dam EPDs	-0.9 1.5	53 55	99 100	23 25	0.09 0.48	0.41 0.25	29.39 55.64
34	4	Rito 6EM3 of 4L1 Emblazon PF 6578 Primrose 5071	15266350 15072163	G A R Grid Maker W C C Primrose J146	Sire EPDs Dam EPDs	-0.9 3.4	53 52	99 97	23 18	0.09 0.47	0.41 0.44	29.39 52.70
35	5	EXAR Titlelist T011 EXAR Evas 71555	15714917 15828043	EXAR 263C G A R Evas Ext 1525	Sire EPDs Dam EPDs	1.4 3.1	48 52	79 100	22 34	0.71 0.62	0.26 0.15	51.45 58.18



Sire of Lot 36



Flushmate to Dam of Lot 36



Dam of Lots 37 & 39



Dam of Lot 38

Lot #	Eggs	Sire Name Dam Name	Sire Reg Dam Reg	MGS Name MGD Name	EPDs	BW	WW	YW	Milk	Marb	REA	\$B
36	4	EXAR Wanted 9732B EXAR Forever Lady 2627	16256589 15619487	BR Midland V A R Forever Lady 4304	Sire EPDs Dam EPDs	3.0 2.9	52 47	93 82	26 21	0.64 0.24	0.01 0.35	59.19 37.91
37	4	G A R Ultimate EXAR Blackcap 7058	15464043 15670180	EXAR 263C EXAR Blackcap 2851	Sire EPDs Dam EPDs	2.6 2.1	61 58	101 107	28 24	0.86 0.55	0.52 0.45	66.43 63.14
38	3	B C Lookout 7024 G A R New Design 6231	14791623 14011413	B/R New Design 036 G A R Precision 1928	Sire EPDs Dam EPDs	2.6 2.4	50 36	81 74	16 23	0.23 0.80	0.58 0.01	51.34 59.79
39	4	G A R Predestined EXAR Blackcap 7058	13395344 15670180	EXAR 263C EXAR Blackcap 2851	Sire EPDs Dam EPDs	4.0 2.1	52 58	98 107	30 24	1.15 0.55	0.48 0.45	68.33 63.14



EXAR Lutton 1831



Sitz Upward 307R



Connealy Onward



Tehama Bando 155



SAF Focus of ER



EXAR Sudden Impact 1537



EXAR Pit Boss 409



B/R New Design 323



Lot	# Straws	Name	Reg	BW	WW	YW	Milk	Marb	REA	\$B
40	3	EXAR Lutton 1831	14035047	2.7	66	116	33	0.45	-0.08	62.49
41	3	EXAR Lutton 1831	14035047	2.7	66	116	33	0.39	-0.10	60.79
42	3	Sitz Upward 307R	14963730	2.3	69	131	37	0.40	0.47	67.18
43	3	Connealy Onward	14216491	2.1	60	124	26	0.36	0.43	64.39
44	5	Q A S Traveler 23-4	9250717	-0.3	21	46	18	0.28	-0.21	20.35
45	5	Tehama Bando 155	9891499	-0.9	26	54	20	0.27	-0.22	26.51
46	5	S A F Focus of E R	12618076	0.4	50	89	22	0.46	-0.09	43.01
47	3	EXAR Sudden Impact 1537	13806056	2.2	57	104	33	0.24	0.08	51.83
48	3	EXAR Pit Boss 409	14682821	2.3	60	98	24	0.33	0.07	55.48
49	3	EXAR Pit Boss 409	14682821	2.3	60	98	24	0.33	0.07	55.48
50	3	B/R New Design 323	11928774	0.7	33	66	19	0.86	0.53	54.48

## Embryo & Rare Semen Internet Auction

Bidding begins... November 16 at Noon CST || Bidding closes... November 18 at 7 p.m. CST

Bid at... [LiveAuctions.TV](#)

...Bid price is per embryo. For example if offering 4 embryos or units of semen in a package, the package price is 4X bid price.

...Buyer is responsible for the cost of shipping embryos and/or semen. US Shipping = \$85 or \$165 overnight.



*If you have any questions or if we can be of additional service, don't hesitate to contact any Express Ranches staff member anytime.*

2202 N. 11th St. | Yukon, OK 73099 | Bob Funk, Owner | Jarold Callahan, President  
800-664-3977 | 405-350-0044 | [www.expressranches.com](http://www.expressranches.com) | [squires@expressranches.com](mailto:squires@expressranches.com)