



## EXPRESS RANCHES 2013 FALL BULL SALE SUPPLEMENT SHEET MONDAY, OCTOBER 7 - NOON

— UPDATED LOT INFORMATION —

**LOT 1**—SELLING ½ INTEREST AND ½ POSSESSION.  
BUYER'S OPTION FOR SPRING OR FALL POSSESSION.

**LOT 22**—SELLING ½ INTEREST AND ½ POSSESSION.  
BUYER'S OPTION FOR SPRING OR FALL POSSESSION.

— LOTS OUT —

LOT	LOT	LOT	LOT	LOT
21	88	121	182	215
46	105	129	188	216
78	110	163	191	227
85	120	176	198	

— DD Test Results —

LOT	RESULTS	LOT	RESULTS	LOT	RESULTS
9	DDC	158	DDC	203	DDC
47	DDC	159	DDC	229	DDC
48	DDC	170	DDC	241	DDC
56	DDC	185	DDC	249	DDC
68	DDC	186	DDC	271	DDC
70	DDC	187	DDC	277	DDC
107	DDC	189	DDC	282	DDC
131	DDC	194	DDC		
152	DDC	200	DDC		

— Selling in Groups —

### 301A | EXAR RITA 2859

[DDP]

DOB: 4/26/2012 • COW • REG: +17226674 • TATTOO: 2859

SITZ UPWARD 307R	BW	Marb
EXAR UPSHOT 0562B	2.4	.84
EXAR BARBARA T020	WW	REA
G A R PREDESTINED	51	.88
G A R PREDESTINED N665	Milk	\$W
G A R PRECISION 81	29	31.96
	YW	\$B
EPDs current as of 9/26/2013	100	97.17

Checked Safe to EXAR Consensus 1385B. Approximate Due Date 3/20/2014. A powerful daughter of EXAR Upshot with a SB over S97!

### 301B | EXAR ROSE 2858

[DDP]

DOB: 4/25/2012 • COW • REG: +17226673 • TATTOO: 2858

SITZ UPWARD 307R	BW	Marb
EXAR UPSHOT 0562B	1.2	.48
EXAR BARBARA T020	WW	REA
KMK ALLIANCE 6595 187	53	.69
A & B ROSE 9159	Milk	\$W
A&B ROSE 8171	22	32.12
	YW	\$B
EPDs current as of 9/26/2013	100	88.86

Checked Safe to EXAR Consensus 1385B. Approximate Due Date 3/03/2014. Big Spread daughter of EXAR Upshot!

### 301C | EXAR DIXIE ERICA 2172

DOB: 2/10/2012 • COW • REG: 17185895 • TATTOO: 2172

SITZ UPWARD 307R	BW	Marb
EXAR UPSHOT 0562B	5.2	.67
EXAR BARBARA T020	WW	REA
EXAR NEW LOOK 2971	45	.75
J&J DIXIE ERICA 520	Milk	\$W
J&J 6807 DIXIE 012	26	18.11
	YW	\$B
EPDs current as of 9/26/2013	87	95.52

Checked Safe to Sitz Top Game 561X. Approximate Due Date 2/18/2014. Bred to the exciting Express, Sitz and JMB herd sire, Top Game 561X!

### 301D | EXAR LUCY 2774

DOB: 3/12/2012 • COW • REG: +17226655 • TATTOO: 2774

SITZ UPWARD 307R	BW	Marb
EXAR UPSHOT 0562B	4.2	.33
EXAR BARBARA T020	WW	REA
B C C BUSHWACKER 41-93	62	.69
BASIN LUCY 6975	Milk	\$W
BASIN LUCY 3829	32	29.36
	YW	\$B
EPDs current as of 9/26/2013	108	86.35

Checked Safe to EXAR Consensus 1385B. Approximate Due Date 3/10/2014. Upshot x Lucy is one of the most sought-after matings in the country!



Sire of Lots 301A-301D

**EXAR UPSHOT 0652B**

## 302A | EXAR DIXIE ERICA 2914

DOB: 1/15/2012 • COW • REG: +17161011 • TATTOO: 2914

CONNEALY CONSENSUS	BW	Marb
CONNEALY CONSENSUS 7229	3	.74
BLUE LILLY OF CONANGA 16	WW	REA
EXAR NEW LOOK 2971	59	.63
J&J DIXIE ERICA 520	Milk	\$W
J&J 6807 DIXIE 012	17	31.05
	YW	\$B
EPDs current as of 9/26/2013	100	86.45

Checked Safe to CL&C Cavalier 1025. Approximate Due Date 3/3/2014. The first daughters of Consensus are in production and they are making excellent brood cows!

## 302B | EXAR RITA 2843

DOB: 3/28/2012 • COW • REG: +17205099 • TATTOO: 2843

CONNEALY CONSENSUS	BW	Marb
CONNEALY CONSENSUS 7229	.8	.85
BLUE LILLY OF CONANGA 16	WW	REA
G A R PREDESTINED	52	.56
G A R PREDESTINED N605	Milk	\$W
G A R PRECISION 81	25	34.91
	YW	\$B
EPDs current as of 9/26/2013	91	83.13

Checked Safe to EXAR Upshot 0562B. Approximate Due Date 2/9/2014. Excellent calving-ease wrapped up in this Consensus daughter.

## 302C | EXAR MISS BLACKCAP 2716

DOB: 1/17/2012 • COW • REG: +17160958 • TATTOO: 2716

CONNEALY CONSENSUS	BW	Marb
CONNEALY CONSENSUS 7229	2.5	.49
BLUE LILLY OF CONANGA 16	WW	REA
D H D TRAVELER 6807	47	.33
TF MISS BLACKCAP 8717	Milk	\$W
STERLING BLACKCAP 445	13	25.67
	YW	\$B
EPDs current as of 9/26/2013	82	66.04

Checked Safe to EXAR Upward 2080. Approximate Due Date 2/18/2014. Should prove to be a durable, easy-fleshing productive female.

## 302D | EXAR PRIMROSE 2720

DOB: 1/19/2012 • COW • REG: +17160961 • TATTOO: 2720

CONNEALY CONSENSUS	BW	Marb
CONNEALY CONSENSUS 7229	-1.2	1.01
BLUE LILLY OF CONANGA 16	WW	REA
G A R PREDESTINED	50	.60
DC RWPC PRIMROSE U402	Milk	\$W
W C C PRIMROSE J136	23	34.86
	YW	\$B
EPDs current as of 9/26/2013	91	86.97

Checked Safe to EXAR Impression 1489B. Approximate Due Date 3/13/2014. Check out this low birth and high marbling genetic combo!



Sire of Lots 302A-302E

## 302E | EXAR RITA 2855

DOB: 4/17/2012 • COW • REG: +17226667 • TATTOO: 2855

CONNEALY CONSENSUS	BW	Marb
CONNEALY CONSENSUS 7229	1	1.12
BLUE LILLY OF CONANGA 16	WW	REA
EXAR 263C	58	.57
EXAR RITA 7855	Milk	\$W
RITA 1197 OF 2536 RITO 616	26	39.14
	YW	\$B
EPDs current as of 9/26/2013	94	84.47

Checked Safe to EXAR Impression 1489B. Approximate Due Date 3/3/2014. Consensus on 263C daughters has been an excellent mating.

## — Selling in Groups —

## 303A | EXAR ERICA 2594

DOB: 3/12/2012 • COW • REG: 17187574 • TATTOO: 2594

EXAR TITLELIST T011	BW	Marb
EXAR STONEY 0262B	1.8	.95
EXG BLACKBIRD P777 R3	WW	REA
EXAR RITO 5118 OF RITO 112	55	.39
PF 5118 ERICA 8014	Milk	\$W
WELLS ERICA 104W FGR	35	31.79
	YW	\$B
EPDs current as of 9/26/2013	104	84.33

Checked Safe to Buford Ranch Hand Y194. Approximate Due Date 2/12/2014. Daughter of the National Western Grand Champion Sale Bull, EXAR Stoney!

## 303B | EXAR PRIMROSE 6642

DOB: 4/20/2012 • COW • REG: 17214022 • TATTOO: 6642

EXAR TITLELIST T011	BW	Marb
EXAR STONEY 0262B	0.9	.89
EXG BLACKBIRD P777 R3	WW	REA
RITO 112 OF 2536 RITO 616	45	.18
EXAR PRIMROSE 4615	Milk	\$W
SUMMITCREST PRIMROSE 2J02	31	33.13
	YW	\$B
EPDs current as of 9/26/2013	93	60.99

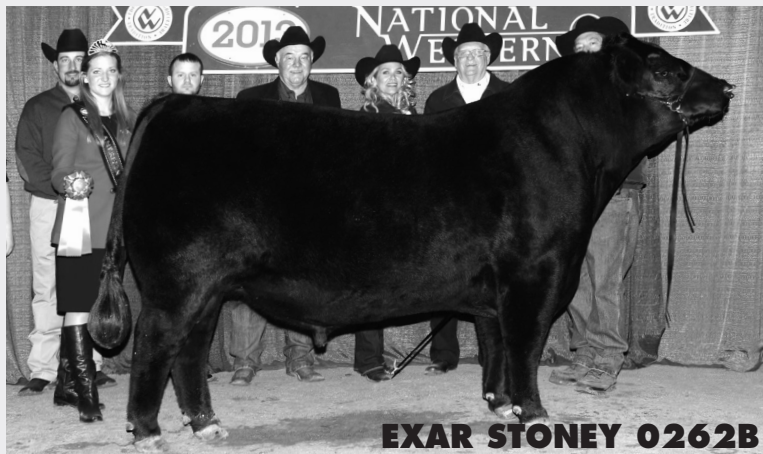
Checked Safe to Buford Ranch Hand Y194. Approximate Due Date 2/09/2014. Dam has been a longtime Primrose donor.

## 303C | EXAR PRINCESS 6662

DOB: 4/22/2012 • COW • REG: 17214024 • TATTOO: 6662

EXAR TITLELIST T011	BW	Marb
EXAR STONEY 0262B	1.5	.67
EXG BLACKBIRD P777 R3	WW	REA
RITO 6EM3 OF 4L1 EMBLAZON	47	.40
EXAR PRINCESS 9260	Milk	\$W
WK PRINCESS 1194	24	26.63
	YW	\$B
EPDs current as of 9/26/2013	94	65.49

Checked Safe to Curtin Flatlander 2017. Approximate Due Date 2/24/2014. From the famous Princess tribe!



Sire of Lots 303A-303D

## 303D | EXAR JUNE 6692

DOB: 5/10/2012 • COW • REG: 17226680 • TATTOO: 6692

EXAR TITLELIST T011	BW	Marb
EXAR STONEY 0262B	2.6	.7
EXG BLACKBIRD P777 R3	WW	REA
BON VIEW NEW DESIGN 1407	53	.53
EXAR JUNE 7876	Milk	\$W
EXAR JUNE C 3577	33	27.52
	YW	\$B
EPDs current as of 9/26/2013	105	75.99

Checked Safe to Buford Ranch Hand Y194. Approximate Due Date 2/17/2014. Dam is a full sister to EXAR 263C!

## 304A | EXAR LADY 6182

DOB: 3/7/2012 • COW • REG: 17187598 • TATTOO: 6182

HOOVER DAM	BW	Marb
BASIN HD 122X	-1.0	.71
BASIN ENCHANTRESS 2P15	WW	REA
S S OBJECTIVE T510 OT26	57	.72
EXAR LADY 0804	Milk	\$W
SOUTHERN 608 LADY 0175	31	36.81
EPDs current as of 9/26/2013	YW	\$B
	99	73.79

Checked Safe to EXAR Impression 1489B. Approximate Due Date 3/13/2014. Excellent Calving ease bred female.

## 304B | EXAR QUEEN 6202

DOB: 3/7/2012 • COW • REG: 17187601 • TATTOO: 6202

S A V PIONEER 7301	BW	Marb
SANDPOINT PIONEER X263	-0.4	.70
C F PRIDE 505	WW	REA
S S OBJECTIVE T510 OT26	49	.53
EXAR QUEEN 4009	Milk	\$W
EXAR QUEEN 5035	26	37.59
EPDs current as of 9/26/2013	YW	\$B
	88	47.81

Checked Safe to EXAR Combination 1750B. Approximate Due Date 2/09/2014. Calving-ease EPD of +15 and high Marbling!

## 304C | EXAR BLACKCAP 6022

DOB: 3/2/2012 • COW • REG: 17187582 • TATTOO: 6022

S A V FINAL ANSWER 0035	BW	Marb
SANDPOINT FINAL ANSWER X792	-.2	.28
E&B LADY ERICA 128	WW	REA
S A V BISMARCK 5682	43	.56
EXAR BLACKCAP 0747	Milk	\$W
G A R 1407 NEW DESIGN 2082	23	32.36
EPDs current as of 9/26/2013	YW	\$B
	83	47.74

Checked Safe to EXAR Consensus 1385B. Approximate Due Date 3/10/2014. Traces back to the highly productive 2082!

## 304D | EXAR ERICA 6402

DOB: 3/18/2012 • COW • REG: 17191903 • TATTOO: 6402

EXAR LUTTON 1831	BW	Marb
EXAR WANTED 9732B	2.8	.24
TWIN EAGLES BLACKBIRD 174K	WW	REA
O S U IMPACT 3182	39	-.13
OSU ERICA 7163	Milk	\$W
O S U 869A ERICA 4147	28	24.44
EPDs current as of 9/26/2013	YW	\$B
	65	52.97

Checked Safe to Buford Ranch Hand Y194. Approximate Due Date 2/9/2014. Daughter of the elite show sire, EXAR Wanted!

## 304E | EXAR FOREVER LADY 2214

DOB: 2/22/2012 • COW • REG: 17185954 • TATTOO: 2214

B C LOOKOUT 7024	BW	Marb
EXAR PLAYMAKER 0208B	0.0	.30
G A R 044 TRAVELER 2328	WW	REA
V A R RITO 112 6009	43	.79
EXAR FOREVER LADY 0979	Milk	\$W
EXAR FOREVER LADY 5823	22	32.56
EPDs current as of 9/26/2013	YW	\$B
	73	56.92

Checked Safe to EXAR Consensus 2821B. Approximate Due Date 2/19/2014. Added REA- EPD with Calving-ease!

## 304F | EXAR JUANA ERICA 6222

DOB: 3/8/2012 • COW • REG: 17187604 • TATTOO: 6222

EXAR 263C	BW	Marb
EXAR WAR GENERAL 9701B	3.0	.51
BALDRIDGE RITA R189	WW	REA
NORTHERN IMPROVEMENT 4480 GF	48	.41
EXAR JUANA ERICA 0316	Milk	\$W
EXG JUANA ERICA T022 R3	29	23.42
EPDs current as of 9/26/2013	YW	\$B
	93	76.58

Checked Safe to Buford Ranch Hand Y194. Approximate Due Date 2/11/2014. Traces to Northern Improvement!

## — Selling in Groups —

## 305A | EXAR RITA 2829

DOB: 3/5/2012 • COW • REG: +17207152 • TATTOO: 2829

PARAMONT AMBUSH 2172	BW	Marb
B C C BUSHWACKER 41-93	4.3	-.08
R C ANITA T BANDO 918903	WW	REA
B/R NEW DESIGN 036	49	.87
G A R NEW DESIGN 1200	Milk	\$W
G A R PRECISION 2536	29	26.25
EPDs current as of 9/26/2013	YW	\$B
	79	59.92

Checked Safe to EXAR Counsel 1016B. Approximate Due Date 2/23/2014. Dam is the immortal, New Design 1200!

## 305B | EXAR BLACKBIRD 2595

DOB: 3/12/2012 • COW • REG: 17187575 • TATTOO: 2595

EXAR 263C	BW	Marb
EXAR WITHSTAND 81520	1.8	.14
G A R 044 TRAVELER 2328	WW	REA
BC 7022 RAVEN 7965	57	.86
BUFORD BLACKBIRD 9072	Milk	\$W
J BAR 7 MADDIE BLACKBIRD 412	29	36.05
EPDs current as of 9/26/2013	YW	\$B
	97	65.97

Checked Safe to Buford Ranch Hand Y194. Approximate Due Date 2/12/2014. Big Spread and Big Ribeye!

## 305C | EXAR RITA 2717

DOB: 1/18/2012 • COW • REG: +17173849 • TATTOO: 2717

EXAR 263C	BW	Marb
EXAR REWARD 0228B	2.2	.38
EXAR BLACKCAP 83062	WW	REA
BC 7022 RAVEN 7965	44	.67
EXAR RITA 84300	Milk	\$W
EXAR BANDO 5019	21	27.43
EPDs current as of 9/26/2013	YW	\$B
	85	63.91

Checked Safe to EXAR Grit 1025B. Approximate Due Date 1/6/2014. Bred to the Express and Genex stud sire, EXAR GRIT 1025B!

## 305D | EXAR LADY 2225

DOB: 3/1/2012 • COW • REG: 17187523 • TATTOO: 2225

RITO 6EM3 OF 4L1 EMBLAZON	BW	Marb
EXAR PURPOSE 0050B	1.7	.31
GREENS PRINCESS 1012	WW	REA
BC 7022 RAVEN 7965	57	.41
EXAR LADY 9169	Milk	\$W
ROLLIN ROCK LADY 3303	22	37.93
EPDs current as of 9/26/2013	YW	\$B
	91	63.19

Checked Safe to EXAR Upshot 2817B. Approximate Due Date 3/13/2014. Service sire is an Express, Rollin Rock, A&B Cattle and ORlgen service sire!

## 305E | EXAR BLACKCAP 6452

DOB: 3/21/2012 • COW • REG: 17205114 • TATTOO: 6452

BASIN EXPEDITION R850	BW	Marb
BASIN EXPEDITION U487	-1.2	.31
BASIN LADY 9072	WW	REA
EXAR TITLELIST T011	37	.41
EXAR BLACKCAP 0891	Milk	\$W
G A R 044 TRAVELER 2328	23	21.36
EPDs current as of 9/26/2013	YW	\$B
	86	

Checked Safe to Curtis Flatlander 2017. Approximate Due Date 2/18/2014. Excellent and proven calving-ease leader!

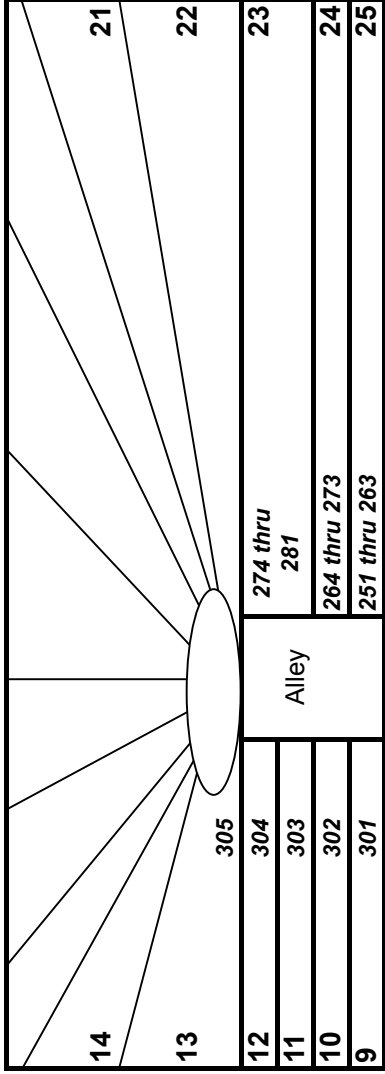
## 305F | EXAR FOREVER LADY 2750

DOB: 2/16/2012 • COW • REG: +17186126 • TATTOO: 2750

EXAR LUTTON 1831	BW	Marb
EXAR WANTED 9732B	2.5	.29
TWIN EAGLES BLACKBIRD 174K	WW	REA
BR MIDLAND	42	.20
EXAR FOREVER LADY 4537	Milk	\$W
V A R FOREVER LADY 4304	23	25.63
EPDs current as of 9/26/2013	YW	\$B
	71	60.77

Checked Safe to Dameron First Impression. Approximate Due Date 1/5/2014. Bred for show all the way!

# Welcome to Express Ranches 2013 Ranchers Bull Sale



HL1	HL2	HL3
602, 603, 604, 605, 607, 608, 609, 610, 612, 613, 614, 615, 617, 618, 619, 620	702, 703, 704, 705, 707, 708, 709, 710	

Nursing Lot
502, 503, 504, 505, 507, 508, 509, 510

282	1	2	3	4	5	6	7	8	Parking Lot
	119 thru 135	136 thru 155	156 thru 175	176 thru 195	196 thru 208	209 thru 220	221 thru 234	235 thru 250	

Sale Barn	Alley	26	27	28	29	30	31	32	33
			401 406 411	416 421 426	431 436	441 446	501 506	601 606 611 616	701 706
			Alley						
			34	35	36	37			
			402, 403, 404, 405, 407, 408, 409, 410, 412, 413, 414, 415	417, 418, 419, 420, 422, 423, 424, 425, 427, 428, 429, 430	432, 433, 434, 435, 437, 438, 439, 440	442, 443, 444, 445, 447, 448, 449, 450			

7	6	5	4	3	2	1
101 thru 118	84 thru 100	69 thru 83	54 thru 68	39 thru 53	19 thru 38	1 thru 18



**THANK YOU FOR MAKING  
EXPRESS RANCHES YOUR CHOICE FOR PERFORMANCE BULLS.**